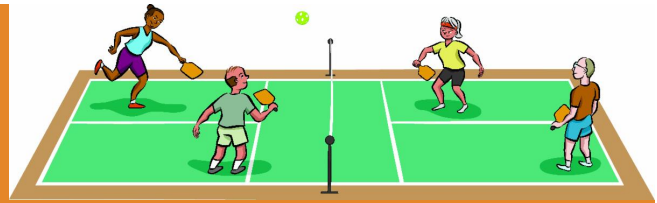




Maple Leaf Pickleball Club



THE FUN CLUB THAT WELCOMES PLAYERS
OF ALL LEVELS
FROM BEGINNERS TO ADVANCED!!

President's Letter

Tony Stam, President

Dear ML Pickleball Club Members;

Hurricane Ian has certainly thrown a monkey wrench into all our plans for the fall session of Pickleball here at Maple Leaf. The board has discussed in some detail our thoughts and best direction for our fall schedule. As I'm sure everyone realizes we will not be getting our additional courts any time soon thanks to Hurricane Ian. With that in mind, we're implementing the following modifications to our schedule.

- **Registration on Nov 6th** for those in the park is still scheduled from 2-4 pm and will be a more low-key event. It is **BYOB**-Bring Your Own Beverage, and **BYOC**-Bring Your Cash or Check. No vendors, but light snacks and drinks, and much needed fellowship. A full-scale registration event will still be held in January.
- The fun tournament scheduled for **Nov 19th will be cancelled** with so many uncertainties in everyone's lives following Hurricane Ian.
- **Ladders will be suspended** until January due to lack of court space and number of players.

On November 1st our revised court schedule will be active with the **addition of one new skill level**. The addition of the new level is driven by the numbers of players in the intermediate levels. We were looking at more than 120 members playing in only two intermediate levels trying to get court time on only two courts. We have also tried to keep all of our levels consistent with USAPA ratings.

We created this schedule to be fair to **ALL** members. In the new schedule, every level will have one day off. In the spirit of fairness and good sportsmanship, we ask that **all members only play in their chosen skill level**. Members who have the day off are encouraged to play at another venue for their off day or just enjoy time experiencing all of the other great activities in the Park!

This is going to be a challenging year anticipating between 250 and 300 members on two courts. We are not going to be able to meet everyone's demands and expectations, but we are trying to allow everyone some time on the courts. The bottom line, it's a great sport and we all want to have a good time both on and off the courts.

Tony
tandvstam@gmail.com

RSVP FOR REGISTRATION DAY

BYOB-Bring Your Own Beverages **BYOC**-Bring Your Check or Cash

Please help us plan for our Fall Registration Day!

Let us know if you will attend to join or to renew your membership.

Sunday, November 6
2pm - 4pm
At the courts

[Click here to RSVP.](#)

Remember to set your clocks back 1 hour on Nov 5th!



Can't Attend on the 6th? You can pre-purchase your 2022/2023 dues online.

- Login to your [CourtReserve Member Portal](#)
- Click on Join Organization
- Choose the Annual CC \$42 membership
 - We appreciate you helping to defray the credit card processing fees
- Click on Pre-purchase membership
- And select AnnualCC \$42
- Enter your CC information, and
- Click Pay!
- And look for a receipt in your email inbox.

How to pay by Cash or Check

- Login to your [CourtReserve Member Portal](#)
- Click on Join Organization
- Choose the Annual \$40 membership
- Click on Pre-purchase membership
- And select Annual \$40
- Call Mike Klatt at (417)-230-3239, or email mlklatt@ymail.com to arrange payment by cash or check.
- And that's it! Your membership will be active once your payment is received and recorded.

Court Schedule - November 1 2022 - January 2 2023

[\(click here for .pdf version of schedule & USAPA skill ratings\)](#)

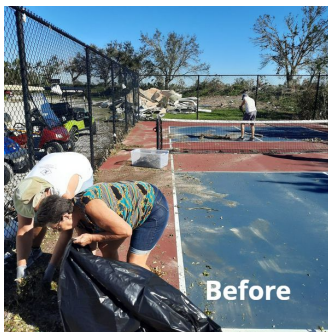
FALL SCHEDULE: NOVEMBER 1, 2022 to JANUARY 2, 2023													
SUNDAY		MONDAY		TUESDAY		WEDNESDAY		THURSDAY		FRIDAY		SATURDAY	
8-9am	Open	8-9am	Open	8-9am	Open	8-9am	Open	8-9am	Open	8-9am	Open	8-9am	Open
9-11am	Novice 2.5	9-11am	Advanced 4.5	9-11am	Intermediate Plus 4.0	9-11am	Intermediate 3.5	9-11am	Intermediate Minus 3.0	9-11am	Novice 2.5	9-11am	Advanced 4.5
11-1pm	Intermediate Minus 3.0	11-1pm	Novice 2.5	11-1pm	Advanced 4.5	11-1pm	Intermediate Plus 4.0	11-1pm	Intermediate 3.5	11-1pm	Intermediate Minus 3.0	11-1pm	Intermediate 3.5
1-3pm	Intermediate 3.5	1-3pm	Intermediate Minus 3.0	1-3pm	Novice 2.5	1-3pm	Advanced 4.5	1-3pm	Intermediate Plus 4.0	1-3pm	Intermediate 3.5	1-3pm	Training (Beginners) 1.0
3-5pm	Intermediate Plus 4.0	3-5pm	Intermediate 3.5	3-5pm	Intermediate Minus 3.0	3-5pm	Novice 2.5	3-5pm	Advanced 4.5	3-5pm	Intermediate Plus 4.0	3-4pm	Reserve a Court See Note 2
5-6pm	Open	5-6pm	Open	5-6pm	Open	5-6pm	Open	5-6pm	Open	5-6pm	Open	4-5pm	Reserve a Court See Note 2
												5-6pm	Reserve a Court See Note 2

Note 1: If there are more than 8 players waiting to get on the court then every game will **immediately** become first to 9 points only. No winning by 2.
Note 2: Any 4 members wishing to reserve a court for a 1 hour slot can reserve online in their Member Portal on CourtReserve, and can invite 3 other players!

Play Level	ML Rating	# 2 hour slots	# Hours	ML ratings are considered mostly consistent with USA Pickleball Association Skill Level Ratings.
Training (Beginners)	1.0	1	2	See reverse side for summary of USAPA Skill Ratings Definitions.
Novice	2.5	5	10	
Intermediate Minus	3.0	5	10	https://usapickleball.org/tournaments/tournament-player-ratings/player-skill-rating-definitions/
Intermediate	3.5	6	12	
Intermediate Plus	4.0	5	10	In the spirit of fairness and to give all players equal opportunity to play, please restrict your playing time to your self-assessed assigned skill level time slot.
Advanced	4.5	5	10	
Open Time			13	
Reserve a Court			3	
			70	

IF YOU WERE EITHER INT MINUS OR PLUS, PLEASE LOGIN TO YOUR **COURTRESERVE MEMBER PORTAL** AND CONFIRM MINUS OR PLUS, OR CHOOSE THE NEW LEVEL, INTERMEDIATE.

Court Update



Monday October 3rd: a great group of members took the time to clean up the courts and surrounding area and get the courts ready for play!



Monday October 17th: another great group of members installed the sunshade. Looks great, and provides some much need shade.



Saturday October 22nd: ML Corp. removed the mountain of debris removed location of future courts 3 & 4



Everyday: 20 to 30 members playing from 8am to 11am, and having a great time, supporting fellow members, and feeling blessed.

The ML Corp has their hands full coordinating a whole park clean-up, and the County Building Dept is inundated with processing an untold amount of building permits. So we understand the Rampart Land Area project witch includes our court construction will be delayed.

Our Construction Committee will address the status of our permitting at the most respectful and appropriate time.

Mike Klatt, Chair-MLPC Construction Committee
mklatt@ymail.com

Event Dates 2022-2023 Season FINAL REVISED.xlsx

EVENT	DAY/DATE	TIME	LOCATION
Member Registration Day #1	Sunday, Nov 6, 2022	2pm - 4pm	Courts
Party in the Park	Cancelled until next season		
Ladder Leagues	<u>Ladders is suspended until January 2023. Details to follow.</u>		
ML Activities Expo	Tentatively rescheduled until Friday January 6, 2023		
Fun Tournament #1	Saturday, Nov 19, 2022	All day	Courts
Member Registration Day #2	Monday, Jan 2, 2023	2pm - 4pm	Courts
Fun Tournament #2	Saturday, Jan 14, 2023	TENTATIVE DATE	
TBD	Saturday, Feb 4, 2023	6pm - 10pm	Queensway
Club Championship	Fri, Sat, Sun-Feb 24, 25, 26	All day	Courts
Annual General Meeting	Tuesday, Mar 21, 2023	12pm - 3:30pm	Queensway
MLPC Board Meetings	TBD		
THURSDAY NIGHT SUNDECK			
CANCELLED UNTIL FURTHER NOTICE			